

People have Priority



# Restoration and Prosthetics





# Restoration and Prosthetics

Company	4 – 5
Product overview 1 for Synea Vision, Synea Fusion, Alegra Turbines, Alegra Straight and contra-angle handpieces	6 – 7
Product overview 2 for Roto Quick, Coupling with LED, Air motors, Electric motors	8 – 9
Synea Vision Turbines	10 – 11
Synea Vision 5x Ring LED+	12 – 13
Synea Vision Straight and contra-angle handpieces	14 – 15
Synea Vision Short Edition	16 – 17
Synea Fusion Turbines	18 – 19
Synea Fusion Straight and contra-angle handpieces	20 – 21
Alegra Turbines	22 – 23
Alegra Straight and contra-angle handpieces	24 – 25
Couplings	26 – 27
Air motors	28 – 29
Electric motors	30 – 31
Technical data	32 – 37



W&H Dentalwerk  
Bürmoos (Austria)



W&H Sterilization  
Brusaporto (Italy)



The expectations are high.  
We work with people.

Our most important tool is experience:  
W&H has been manufacturing high-quality dental  
precision instruments since 1890. Continuous  
innovation ensures high quality in the field of  
Restoration and Prosthetics.

The secret to our success: W&H has always focussed  
on people – regardless of whether they are partners,  
customers, patients or employees. It would only be  
natural for you now to ask us: Is that really put  
into practice? Why not put us to the test!

People  
have  
Priority

#### W&H at a glance

- > Head office in Austria
- > 1000 employees worldwide
- > 80 teams
- > Established 1890 in Berlin  
by Jean Weber and Hugo Hampel
- > 3 production facilities
- > 18 subsidiaries in Europe and Asia
- > Export share over 95 %

For more information see  
[wh.com](http://wh.com)

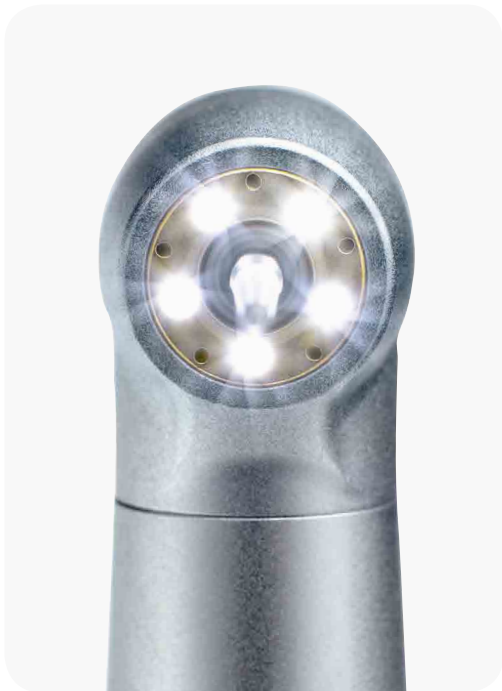
PEOPLE HAVE PRIORITY



## Whatever happens:

With W&H restoration and prosthetic instruments  
you are always prepared.

Now at your dental supplier or at [wh.com](http://wh.com)



»One step ahead  
of the future.«



»The new definition  
of price-performance ratio.«



»A perfect partner when  
treating your patients.«

#### Your advantages at a glance

- > Ring LED+: 5 x optic outlets for shadowless illumination
- > Scratch-resistant surface
- > Extremely powerful
- > Quiet
- > Long service life
- > With Roto Quick and Multiflex®\* connections
- > Hygienic head
- > Ceramic ball bearings
- > Perfect ergonomics
- > Different head sizes with 5x spray
- > Thermo washer disinfectable and sterilizable



## Synea Vision

More info  
on page 10

#### Your advantages at a glance

- > LED+ illumination
- > Small heads
- > Optimal solution
- > Light and smooth
- > Long service life
- > Available with RotoQuick-, Multiflex®\*, NSK®\* or RM-connection
- > Hygienic head
- > Ceramic ball bearings
- > Maximum efficiency in use
- > Uncompromising user comfort
- > Thermo washer disinfectable and sterilizable



## Synea Fusion

More info  
on page 18

#### Your advantages at a glance

- > Fast and precise preparation
- > Excellent ergonomics
- > Perfect balance
- > Durable and long life
- > Long service life
- > Quiet
- > Replaceable water filter
- > Precision cooling
- > Simple bur changing
- > Patented hygienic head system
- > Optimal view
- > Thermo washer disinfectable and sterilizable



## Alegra Turbines, Straight and contra-angle handpieces

More info  
on page 22





»Versatile system interfaces.«



»High motor power and long lifespan.«

»Short and light weight.«



#### Your advantages at a glance

- > Light
- > Flexible
- > Sterilizable
- > Free 360° instrument rotation
- > Continuous regulation of the spray water supply
- > Roto Quick non-retraction valve

## Roto Quick



#### Your advantages at a glance

- > Use of LED without any changes at all in the dental unit
- > Long service life of the LED
- > Continuous regulation of the spray water supply
- > Multiflex®\* non-retraction valve

## Coupling with LED



More info  
on page 26

#### Your advantages at a glance

- > Short and lightweight
- > The LED in the air motor guarantees optimal view
- > Extremely powerful motor with high torque
- > Long lifespan

## Air motors



#### Your advantages at a glance

- > Motor fully sterilizable
- > Light weight
- > Exceptionally powerful
- > Brushless – therefore maintenance-free
- > Long life
- > Lifetime bearing lubrication
- > Wide range of applications

## Electric motors



More info  
on page 28

# Synea Vision Turbines



# For the highest demands

**Innovative. Flexible. Durable.** Ultimate ground breaking technology for excellent preparation results: Discover the Synea Vision range with unique innovations such as the shadowless Ring LED+ or the special new scratch-resistant surface coating!



## Light and smooth

Fatigue-free working with noticeably lighter turbine system.



## Scratch-resistant surface

A special scratch-resistant coating maintains the value of the entire range.



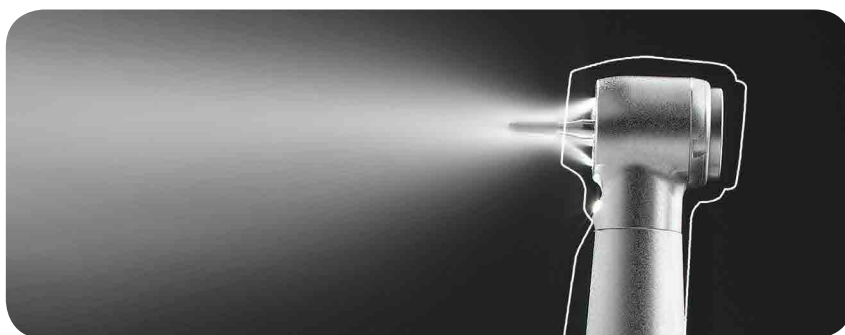
## Tailor-made turbines

The right head size for every application and connections for the most popular coupling systems.



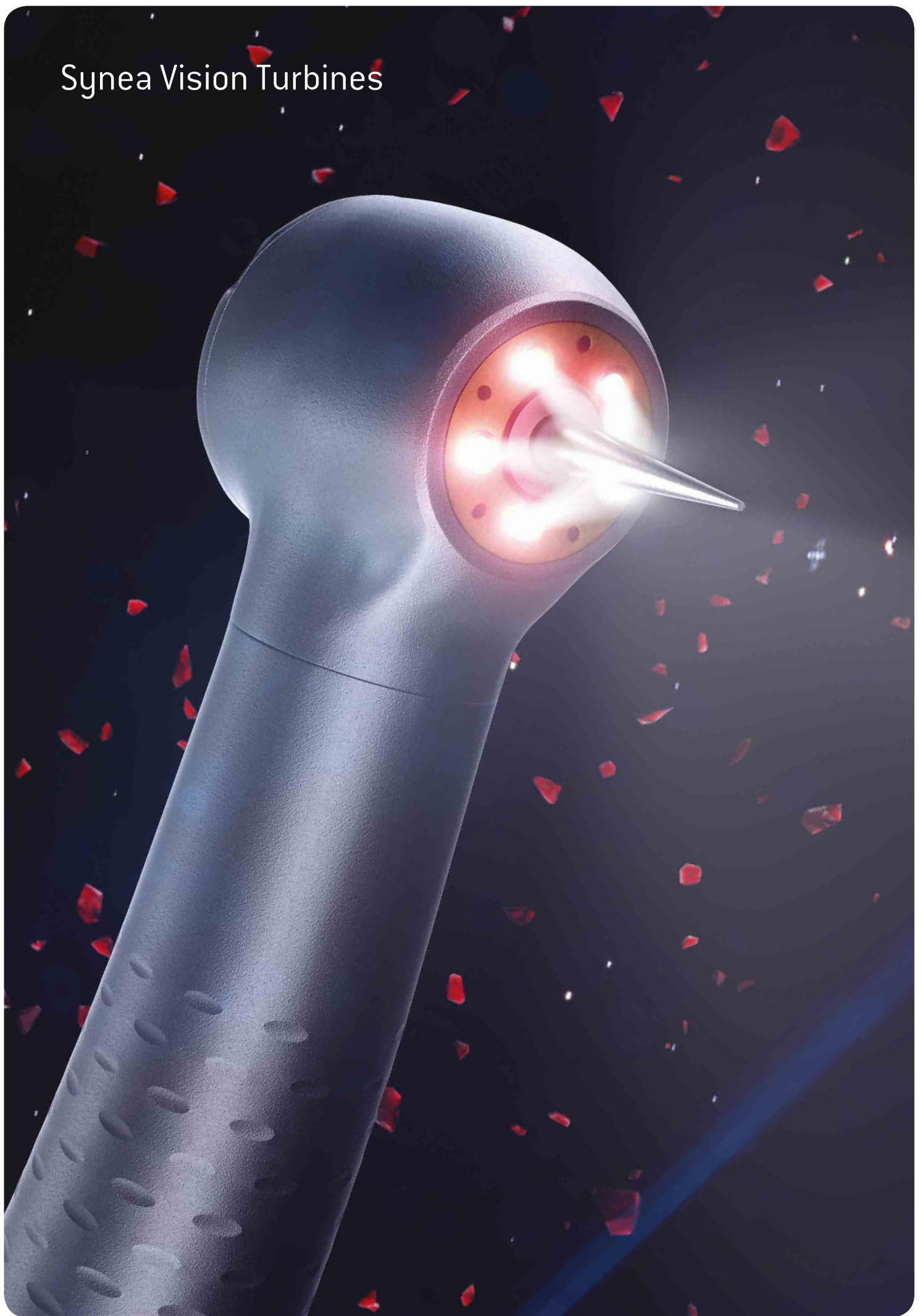
## Microturbine TK-94 L

with a head diameter of only 9 mm and an overall head height of 17.2 mm with 16 mm bur attached and 12 watt power.



The Synea Vision microturbine TK-94 L is particularly well suited for minimally invasive procedures, for example in paediatric dentistry. Generally though, it is ideal for all patients with a small mouth opening.

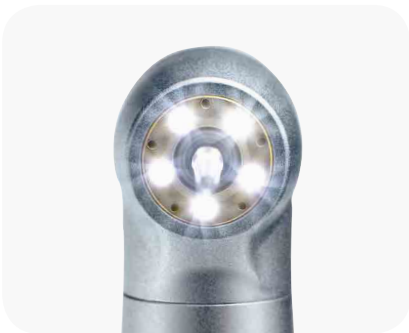
# Synea Vision Turbines





# Ring LED+

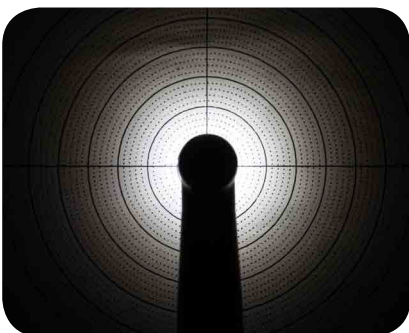
**Innovation, Variety, Durability.** With the Synea Vision Ring LED+ TK-97 L, TK-98 L and TK-100 L turbines, we offer the world's first sterilizable 5x Ring LED+ for a completely new way of working – without a shadow of doubt.



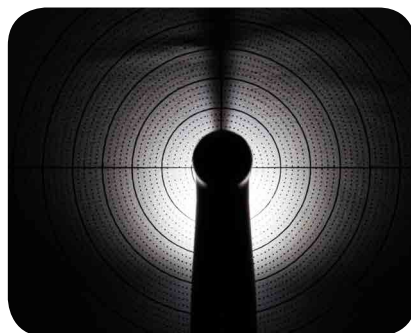
**Comfort to the power of 5!**  
Five LEDs and five spray ports revolutionise visual comfort and ease of use.



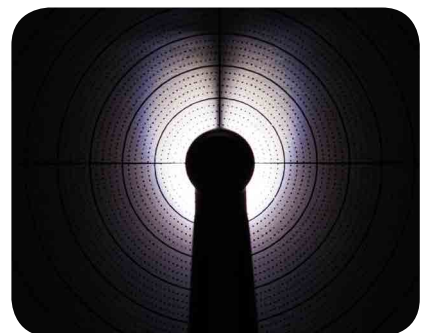
**TK-97 L, TK-98 L and TK-100 L**  
Three turbines, one advantage: top visibility and cooling.



**Synea Vision Ring LED+**  
The aim was shadowless illumination.



**Synea Fusion LED+**  
The result hits the target.



**Competitor**

# Synea Vision Straight and contra-angle handpieces



# Ultimate Technology

**Precision. Elegance. Comfort.** A range for all applications: W&H has developed a range of top quality instruments with the new Synea Vision line. Two high-speed head sizes are available for impressive access options. And a special coating improves aesthetics even more – whilst extending their life and preserving their value.

**syneo** VISION

**Instruments for the future**

- > Different head sizes with 5x spray
- > Perfect ergonomics and quiet operation
- > Scratch-resistant surface
- > Long service life



## Small heads

Two high-speed head sizes and the world's lowest head height among slow-speeds. Also ideal for patients with limited access.



## Scratch-resistant surface

A special coating resists signs of wear – for long-lasting aesthetics so they always look as good as new.



## 5x spray

The 5x spray\* ensures even cooling of the treatment site under all conditions.



## Excellent preparation results

with outstandingly quiet operation and optimised head sizes.



## Versatile range

The right straight or contra-angle handpiece for every application – in Synea quality!

\* on speed-increasing models



Synea Vision Short Edition  
Straight and contra-angle handpieces



# The perfect balance between power and ergonomics

**Short and easy.** The new Synea Vision Short Edition makes the treatment process considerably easier due to the reduction in weight and length. Choose from the classic range of high and slow-speeds. The perfect balance between ergonomics and power when combined with the new, ultra-short micromotor EM-12 L.



## Perfect balance

Fit perfectly in your hand: the contra-angle handpieces of the Short Edition.



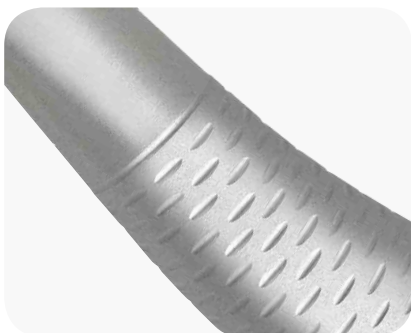
## Small but powerful

The new micromotor EM-12 L with LED for bright as daylight illumination of the treatment area.



## Contra-angle handpieces for all situations

The Synea Vision Short Edition in the classic range and with two different head sizes for high-speeds.



## Scratch-resistant surface

even on the small Synea Vision contra-angle handpieces.



## Best results

due to easy access and small head sizes.



## Substantially lighter and shorter

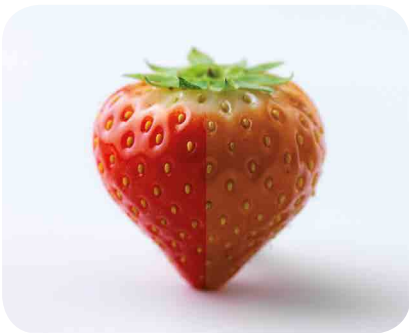
The combination of Synea Vision Short Edition contra-angle handpieces with the EM-12 L electric motor is so light in weight that it considerably reduces the risk of repetitive strain injury.

# Synea Fusion Turbines



# Unbeatable value for money

**Economic. Durable. Ergonomic.** Uncompromising user comfort combined with outstanding economy: Discover the benefits of the Synea Fusion range!



**Experience LED+**  
Optimum illumination, natural colour reproduction and LED positioned directly beneath the instrument head.



**Effective cooling of four sides**  
Continuous cooling with Quattro Spray\*.



**Best ergonomics**  
Synea turbines are comfortable in the hand and have a non-slip coating.



**Reliability**  
Top quality for a long life.

\* on speed-increasing model



# Synea Fusion Straight and contra-angle handpieces



# Ultimate price-performance ratio

**Economic. Ergonomic. Efficient.** Proven Synea quality has never been so economical: With the Synea Fusion line W&H has developed a range of instruments in which economy is as important as quality.

**syneo** FUSION

**Quality that pays for itself**

- > Proven Synea quality
- > Maximum efficiency in use
- > Uncompromising user comfort



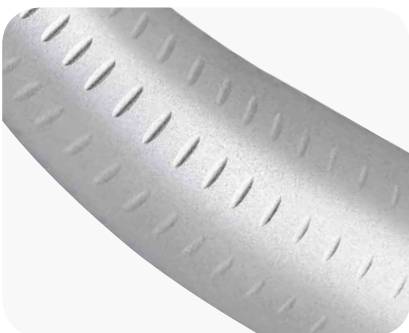
#### Good illumination

Compact glass rod for good illumination of the treatment site.



#### Small head

Best visibility and optimal access thanks to new, compact head sizes.



**Optimised grip profile**  
for secure grip and optimum hygiene.



**Special instruments**  
Special reciprocating contra-angle handpieces for areas that are difficult to access.

# Alegra Turbines





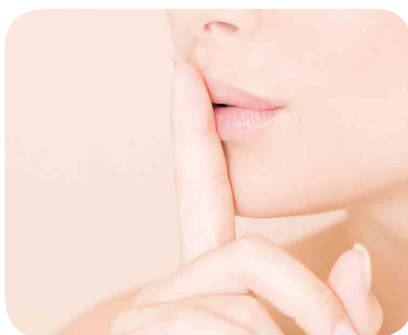
# Long service life and extremely quiet operation

**Reliable. Efficient. Precise.** The Alegra range of turbines offers high-end technology for top preparation results! Experience maximum efficiency during use combined with maximum safety: for you and your patients.



## Long service life

Ceramic ball bearings guarantee minimum wear. Particularly with optimum care and maintenance!



## Quiet

Alegra turbines offer top quality, vibration-free, quiet operation thanks to precision manufacture.



## Precision cooling

The triple spray during treatment cools the treatment site from all sides and guarantees safety during treatment.



## Tailor-made turbines

From hard-to-reach areas to fast removal of tooth structure: The right head size for every application.



## Optimal view

The position of the LED in the turbine head guarantees optimal view and illumination of the treatment site.



## Replaceable water filter

Prevents dirt particles from entering the turbine.

## Alegra Straight and Contra-angle handpieces



# Maximum efficiency and safety during treatment

**Long life. Compact. Precise.** Treatment of your patients is very efficient and extremely safe with Alegra. Straight and contra-angle handpieces »Made in Austria« and designed with proven W&H quality.



## Simple bur changing

The push-button chucking system makes changing burs fast and easy.



## Best view

The small contra-angle handpiece head allows a direct view of the treatment site.



## External spray cooling

The optional external spray clip enables cooling of the treatment site.



## Durable and long life

High-quality materials make Alegra straight and contra-angle handpieces particularly durable and long lasting.



## Fatigue-free operation

due to the ergonomic design.

Couplings



# Versatile system interfaces

**Light, flexible and sterilizable.** Roto Quick couplings are versatile to use and are suitable both for instruments with LED+ and LED, as well as halogen light. For use with all standardised turbine tubing.



**Full compatibility**  
compatible with all turbines, air motors and scalers with Roto Quick and Multiflex®\* connections.



**360° instrument rotation**  
for easy handling, prevents the tube from twisting.



**Continuous regulation of the spray water supply**  
quick, customised adjustment by the user even – during treatment.



**Non-retraction valve**  
avoids back-flow of contaminated spray water to minimise the risk of infection.



**Quick coupling with generator**  
A generator in the Roto Quick quick coupling enables the use of light turbines on the turbine hose without a power supply.



**W&H Coupling RM-34 LED for Multiflex®\* connection**  
The coupling with LED can be used alongside the conventional halogen couplings without requiring any changes at all in the dental unit.

\* Multiflex® is a trademark of a third party not affiliated with W&H Dentalwerk Bürmoos GmbH

## Air motors



# High motor power and long lifespan

**Compact. Lightweight. LED.** The W&H air motors are characterized by high motor power and a long lifespan. Power can be controlled smoothly in both forward and reverse drive. They are very quiet and light to use. The air motors are available with or without light.



AM-25 L RM, AM-25 A BC/RM, AM-25 E BC/RM, AM-25 BC/RM

W&H offers the optimal range of air motors for your straight and contra-angle handpieces. The W&H air motors are available with Borden 2(3)-hole system, standard 4-hole system and standard 6-hole system.



## Fast and precise preparation

For efficient use of straight and contra-angle handpieces with powerful W&H air motors.



## LED light

The LED in the air motor AM-25 L RM guarantees optimal view and illumination of the treatment site.



## Excellent ergonomics

Easy 360° rotation of the contra-angle handpiece on the air motor, low overall weight and slender design ensures fatigue-free operation.



## Electric motors



## Short length and light weight

**Compact and powerful.** A compact and exceptionally powerful brushless electric motor, its main applications are fillings, prosthetics and prophylaxis. Its short length and light weight are especially ergonomic and allow you to work with ease.



**Electric Motor EM-E6**

As one of the smallest and lightest motors, the EM-E6 is a reliable drive system for professional work in the field of restoration and prosthetics, as well as prophylaxis.



**Tabletop control EM-E6 TP**

As a table top model, the brushless electric motor is ready for immediate use as there is no need to modify or interfere with the dental control unit.



**Built-In Kit EM-E6**

Ask your dental supplier for details of installing this lightweight motor into your dental unit.



**Electric Motor EM-E7 LED**

With its integrated LED source, it is the ideal partner for straight and contra-angle handpieces with glass light rods. The result: daylight quality illumination over the entire treatment area.



**Built-In Kit EM-E7 LED**

Ask your dental supplier for details of installing this lightweight motor into your dental unit, for daylight quality LED light when used with your optic handpieces.

# Synea Vision – Turbines



Types with integrated  
ceramic ball bearings:

	TK-94 L / TK-94 LM	TK-97 L / TK-97 LM	TK-98 L / TK-98 LM	TK-100 L / TK-100 LM
Light:	LED+ / compact glass rod	Ring LED+ / compact glass rod	Ring LED+ / compact glass rod	Ring LED+ / compact glass rod
CRI (LED version):	> 90	> 90	> 90	> 90
Colour temperature: (LED version):	5,500 K	5,500 K	5,500 K	5,500 K
Luminous flux (lumens):	6.0 / 4.0**	6.0 / 4.0**	6.0 / 4.0**	6.0 / 4.0**
Illuminating power:	25,000 lux	25,000 lux	25,000 lux	25,000 lux
Coupling:	Roto Quick Multiflex®*	Roto Quick Multiflex®*	Roto Quick Multiflex®*	Roto Quick Multiflex®*
Head size:	Ø 9 mm	Ø 10 mm	Ø 11.5 mm	Ø 13 mm
Head height:	17.2 mm (with bur 16 mm)	21.1 mm (with bur 19 mm)	21.4 mm (with bur 19 mm)	21.4 mm (with bur 19 mm)
Power:	12 W	18 W	21 W	22 W
rpm (min <sup>-1</sup> ):	410,000	400,000	360,000	330,000
Rotary instruments:		FG bur, as per ISO 1797-1, with Ø 1.6 mm		
Max. operating part diameter:	1.5 mm	2 mm	2 mm	2.5 mm
Max. length:	16 mm	21 mm	25 mm	25 mm
Weight:	39 g / 67 g	38 g / 68 g	40 g / 69 g	40 g / 70 g
Roto Quick connection operating pressure:	3 ± 0.3 bar	3 ± 0.3 bar	3 ± 0.3 bar	3 ± 0.3 bar
Multiflex®* connection operating pressure:	2.5 to 4 bar	2.5 to 4 bar	2.5 to 4 bar	2.5 to 4 bar
Spray outlets:	5x	5x	5x	5x
Volume:	59 dB (A)	57 dB (A)	57 dB (A)	57 dB (A)

The power and rotary speeds of air drives depend greatly on the quality of the turbine hoses used and may therefore vary from the specified values.

\* Multiflex® is a trademark of a third party not affiliated with W&H Dentalwerk Bürmoos GmbH

\*\* Values apply for use of RM-34 LED with DC power supply

# Synea Vision – Straight and contra-angle handpieces



Types with light: (compact glass rod)	WK-99 LT WK-99 LT S	WK-93 LT WK-93 LT S	WK-66 LT WK-66 LT S	WK-56 LT WK-56 LT S	WK-86 LT	HK-43 LT
Head size:	Ø 9.5 mm	Ø 9.1 mm	Ø 9.5 mm	Ø 9.5 mm	Ø 9.5 mm	–
Head height with bur (19 mm):	21.6 mm	21.2 mm	20 mm	20 mm	20 mm	–
Rotary instruments:	FG bur	FG bur	Contra-angle handpiece bur	Contra-angle handpiece bur	Contra-angle handpiece bur	Straight and contra-angle handpiece burs
Max. operating part diameter:	Ø 2.5 mm	Ø 2 mm	–	–	–	–
Max. length:	25 mm	21 mm	34 mm	34 mm	34 mm	34 mm
Speed increase/reduction:	1:5	1:4.5	2:1	1:1	8:1	1:1
Spray:	5x ( > 50 ml/min)	5x ( > 50 ml/min)	1x ( > 50 ml/min)	1x ( > 50 ml/min)	1x ( > 50 ml/min)	1x ( > 50 ml/min)
Illuminating power in types with light:	25,000 lux	25,000 lux	25,000 lux	25,000 lux	25,000 lux	25,000 lux
Indications:	<ul style="list-style-type: none"> <li>&gt; Crown and cavity preparations</li> <li>&gt; Trephining</li> <li>&gt; Resections</li> <li>&gt; Finishing</li> <li>&gt; Removing fillings and metal</li> </ul>	<ul style="list-style-type: none"> <li>&gt; Crown and cavity preparations</li> <li>&gt; Trephining</li> <li>&gt; Resections</li> <li>&gt; Finishing</li> <li>&gt; Removing fillings and metal</li> </ul>	<ul style="list-style-type: none"> <li>&gt; Excavating</li> <li>&gt; Preparations close to the pulp</li> <li>&gt; Finishing</li> </ul>	<ul style="list-style-type: none"> <li>&gt; Cavity preparations</li> <li>&gt; Trephining</li> <li>&gt; Resections</li> <li>&gt; Separating</li> <li>&gt; Finishing of cavity margins and fillings</li> </ul>	<ul style="list-style-type: none"> <li>&gt; Excavating</li> <li>&gt; Preparations close to the pulp</li> <li>&gt; Root canal filling</li> <li>&gt; Cementing</li> </ul>	<ul style="list-style-type: none"> <li>&gt; Preparing</li> <li>&gt; Separating</li> <li>&gt; Trephining</li> <li>&gt; Resections in anterior area</li> <li>&gt; Minor technical procedures</li> </ul>

	ISO Standard WK-93 LT + EM-E8 LED + VE-9	ISO Short WK-93 LTS + EM-12 L + VE-10
Length (up to end of hose union):	189 mm	160 mm
Weight:	198 g	150 g

# Synea Fusion – Turbines



Types:	TG-97 L / TG-97 L RM / TG-97 LM / TG-97 L N / TG-97	TG-98 L / TG-98 L RM / TG-98 LM / TG-98 L N / TG-98
Light:	LED + / LED + / compact glass rod / compact glass rod / –	LED + / LED + / compact glass rod / compact glass rod / –
CRI (LED version):	> 90	> 90
Colour temperature (LED version):	5,500 K	5,500 K
Luminous flux (lumens):	6.0 / 6.0 / 4.0** / depending on coupling / –	6.0 / 6.0 / 4.0** / depending on coupling / –
Illuminating power:	25,000 Lux	25,000 Lux
Coupling:	Roto Quick / RM-connection Multiflex®* NSK Mach®*	Roto Quick / RM-connection Multiflex®* NSK Mach®*
Head size:	Ø 10 mm	Ø 11.5 mm
Head height:	21.1 mm (with bur 19 mm)	21.4 mm (with bur 19 mm)
Power:	16 W	19 W
rpm (min <sup>-1</sup> ):	390,000	360,000
Rotary instruments:	FG bur, as per ISO 1797-1, with Ø 1.6 mm	
Max. operating part diameter:	2 mm	2 mm
Max. length:	21 mm	25 mm
Weight:	40 g / 43 g / 68 g / 52 g / 40 g	42 g / 44 g / 70 g / 53 g / 42 g
Roto Quick connection operating pressure:	3 ± 0,3 bar	3 ± 0,3 bar
Multiflex®* connection operating pressure:	2.5 to 4 bar	2.5 to 4 bar
Spray outlets:	4x	4x
Volume:	59 dB (A)	59 dB (A)

The power and rotary speeds of air drives depend greatly on the quality of the turbine hoses used and may therefore vary from the specified values.

\* Multiflex® and NSK Mach® are trademarks of third parties not affiliated with W&H Dentalwerk Bürmoos GmbH

\*\* Values apply for use of RM-34 LED with DC power supply

# Synea Fusion – Straight and contra-angle handpieces



Types with light: (compact glass rod)	WG-99 LT	WG-66 LT	WG-56 LT		WG-67 LT	WG-69 LT
Types without light:	WG-99 A	WG-66 A	WG-56 A	HG-43 A	WG-67 A	WG-69 A
Head size:	Ø 9.5 mm	Ø 9.5 mm	Ø 9.5 mm	–	–	–
Head height with bur (19 mm):	21.6 mm	20 mm	20 mm	–	–	–
Rotary instruments:	FG bur	Contra-angle handpiece bur	Contra-angle handpiece bur	Straight and contra-angle handpiece burs	Stroke 1.1 for Dentatus tips	Stroke 0.9 for Intensiv files
Max. operating part diameter:	Ø 2.5 mm	–	–	–	defined by the available files and tips	
Max. length:	25 mm	34 mm	34 mm	34 mm		
Speed increase/reduction:	1:5	2:1	1:1	1:1	2:1	2:1
Spray:	4x ( > 50 ml/min)	1x ( > 50 ml/min)	1x ( > 50 ml/min)	1x ( > 50 ml/min)	1x ( > 50 ml/min)	1x ( > 50 ml/min)
Illuminating power in types with light:	25,000 lux	25,000 lux	25,000 lux	–	25,000 lux	25,000 lux
Indications:	<ul style="list-style-type: none"> <li>&gt; Crown and cavity preparations</li> <li>&gt; Trephining</li> <li>&gt; Resections</li> <li>&gt; Finishing</li> <li>&gt; Removing fillings and metal</li> </ul>	<ul style="list-style-type: none"> <li>&gt; Excavating</li> <li>&gt; Preparations close to the pulp</li> <li>&gt; Finishing</li> </ul>	<ul style="list-style-type: none"> <li>&gt; Crown and cavity preparations</li> <li>&gt; Trephining</li> <li>&gt; Resections</li> <li>&gt; Separating</li> <li>&gt; Finishing of cavity margins and fillings</li> </ul>	<ul style="list-style-type: none"> <li>&gt; Preparing</li> <li>&gt; Separating</li> <li>&gt; Trephining</li> <li>&gt; Resections in anterior area</li> <li>&gt; Minor technical procedures</li> </ul>	<ul style="list-style-type: none"> <li>&gt; Removal of excess materials</li> <li>&gt; Prepolishing</li> <li>&gt; Fine polishing</li> <li>&gt; Buffing in the interdental and subgingival areas</li> <li>&gt; Max. rotational speed 20,000 rpm</li> </ul>	<ul style="list-style-type: none"> <li>&gt; Finishing of interproximal and subgingival areas and cavity margins</li> <li>&gt; Chamfering of the preparation edges and of cavities</li> <li>&gt; Removal of subgingival plaque</li> <li>&gt; Stripping in orthodontics</li> <li>&gt; Max. rotational speed 40,000 rpm</li> </ul>

# Alegra Turbines



Turbines with LED	TE-97 LQ*	TE-98 LQ*	
Couplings with generator	RQ-53 / RQ-54	RQ-53 / RQ-54	
Turbines without light	TE-97 / TE-97 RM / TE-97 BC	TE-98 / TE-98 RM / TE-98 BC	TE-95 RM / TE-95 BC
Light (LED version):	LED and generator	LED and generator	–
Light intensity (LED version):	25,000 lux	25,000 lux	–
Head size:	Ø 10.4 mm	Ø 12.2 mm	Ø 12.2 mm
Power:	14 W	16 W	16 W
Speed:	390,000 min <sup>-1</sup>	330,000 min <sup>-1</sup>	330,000 min <sup>-1</sup>
Rotary instruments:	FG bur, in acc. with ISO 1797-1, Ø 1.6 mm		
Maximum working part diameter:	2 mm	2 mm	2 mm
Maximum length:	21 mm	25 mm	25 mm
Weight:			
> Turbines with LED	46 g	48 g	
> Couplings with generator	26 g / 20 g	26 g / 20 g	
> Turbines without light	46 g / 47 g / 47 g	48 g / 50 g / 50 g	49 g / 49 g
Operating pressure:	2.2 – 2.8 bar (32 – 40 PSI)		
Ball bearings:	Ceramic	Ceramic	Steel
Spray:	Triple	Triple	Single
Volume:	62 dB (A)		

\* TE-97 LQ and TE-98 LQ turbines with LED are intended for use with W&H RQ-53 and RQ-54 Roto Quick couplings only.  
The power and speed of air drives depend on the quality of the turbine hose and may differ from the specified value.



# Alegra Straight and contra-angle handpieces








Type:	WE-56	WE-57	WE-66	HE-43
Gear ratio:	1:1	1:1	4:1	1:1
Head size:	Ø 10.1 mm	Ø 10.1 mm	Ø 10.1 mm	–
Head height (with 19 mm bur):	20.8 mm	22.7 mm	20.8 mm	–
Rotary instruments:	Contra-angle handpiece bur	FG bur	Contra-angle handpiece bur	Straight and contra-angle handpiece burs*
Instrument shaft diameter:	2.35 mm	1.6 mm	2.35 mm	2.35 mm
Max. length:	34 mm	25 mm	34 mm	50 / 34 mm
Weight:	65 g	65 g	65 g	72 g
Spray (optional):	Single external			

\* Can also be used with prophylaxis heads with doriot connection.

# Couplings



Roto Quick couplings:	RQ-24	RQ-34	RQ-14	RQ-03	RQ-04	RQ-53	RQ-54
Light:	yes	yes	–	–	–	generator	generator
Spray control:	–	yes	yes	–	–	–	–
Connection:	6-hole	6-hole	Standard 4-hole	2 (3)-hole	Standard 4-hole	2 (3)-hole	Standard 4-hole
							



W&H coupling for Multiflex®* connection:	RM-34 LED
Light:	LED
Spray control:	yes
Connection:	6-hole



Light, flexible and sterilizable: W&H Roto Quick couplings are versatile to use and are suitable both for instruments with LED+ and LED, as well as halogen light. 24 months of warranty.

The coupling with LED can be used alongside the conventional halogen couplings without requiring any changes at all in the dental unit. Long service life – 24 months of warranty.

# Air motors



Type	AM-25 L RM	AM-25 A RM AM-25 E RM AM-25 RM	AM-25 A BC AM-25 E BC AM-25 BC
Coupling hose end:	Fixed connection Standard 6-hole	Fixed connection Standard 4-hole	Fixed connection Borden 2 (3)-hole
Light (LED version):	LED	–	–
Spray:	internal	internal external –	internal external –
Weight:	77 g	78 g 75 g 73 g	78 g 74 g 73 g
Power:	20 W		
Speed range (min. <sup>-1</sup> ) at an operating pressure of:	2.5 bar: 5,000 – 20,000* 3 bar: 5,000 – 25,000*		
Direction of rotation:	forward / reverse operation mode		

\* The power and speed of air drives depend on the quality of the turbine hose and may differ from the specified value.

# Electric motors



Type	EM-E6
Size (L x Ø)	38.6* x 20.2 mm
Weight	64 g
Speed range	2,000 – 40,000 rpm
Power	55 W
Torque	3 Ncm

\*effective length



Type	EM-E7 LED
Size (L x Ø)	47.5* x 21.5 mm
Weight	79 g
Speed range	2,000 – 40,000 rpm
Power	62 W
Torque	3 Ncm

\* effective length

# Restoration and Prosthetics

Pictures are for illustrative purposes only. Additional equipment and accessories shown are not included as standard.

Scan the QR-Code with  
your mobile telephon  
for more information  
on our products



## Manufacturer:

W&H Dentalwerk Bürmoos GmbH  
Ignaz-Glaser-Straße 53, Postfach 1  
5111 Bürmoos, Austria  
t +43 6274 6236-0  
f +43 6274 6236-55  
office@wh.com  
wh.com